



Office Space for **Sublease**

214 East Galer

214 E Galer St | Seattle, WA

Space highlights

- 2,532 RSF on the 1st floor
- Sublease term through February 2031
- Combination of open work areas, 2 conference rooms and 4 private offices

Building highlights

- Easy access to I-5 and 520
- Access to South Lake Union Streetcar and Metro Buses
- Nearby dining options including Grand Central Bakery and Great Northwest Soup Company

Brooke Dowling

+1 206 607 1746

brooke.dowling@am.jll.

Darrick Thompson

+1 206 521 2667

darrick.thompson@am.jll.com



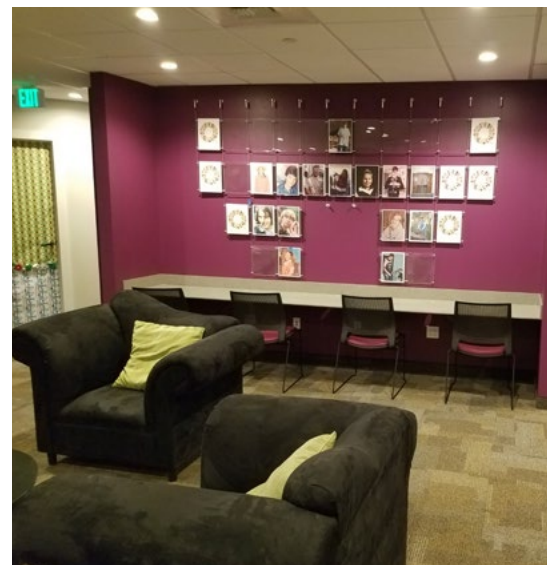
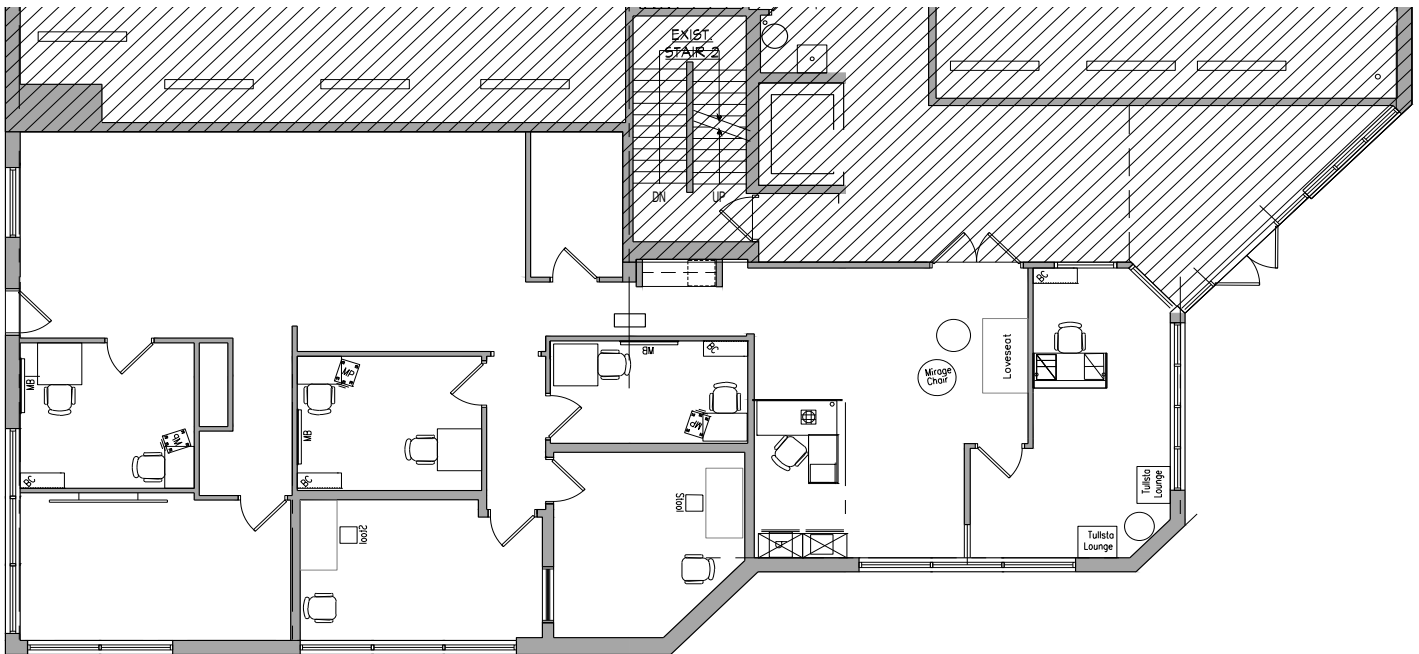
Jones Lang LaSalle Brokerage, Inc.
© 2020 Jones Lang LaSalle IP, Inc.
All rights reserved. All information
contained herein is from sources
deemed reliable; however, no
representation or warranty is made
to the accuracy thereof.

Seattle Tower

Floor 1 | 2,532 RSF

65
Transit Score

77
Walk Score



Lease inquiries Brooke Dowling • +1 206 607 1746 • Darrick Thompson • 206 521 2667

