



Office Space for **Sublease**

83 King

83 S King Street | Seattle, WA

Space highlights

- Contiguous for up to **49,801** RSF
 - 24,900 RSF available on Floor 7
 - 24,901 RSF available on Floor 6
- Sublease term through December 2024
- Furniture can be made available on floor 6

Building highlights

- Historic and artistic feel with brick & beam finishes
- Large floor plates and favorable window lines
- 97 Walk Score and 100 Transit Score
- Building park conference center, showers and lockers, and ample parking

Clay Nielsen

+1 206 521 2664

clay.nielsen@am.jll.com

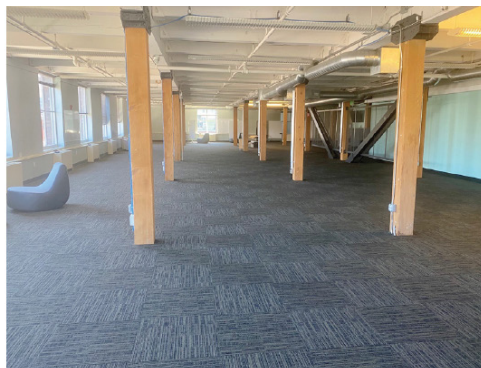
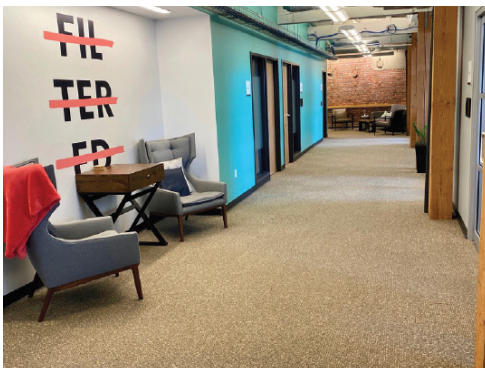
Brooke Dowling

+1 206 607 1746

brooke.dowling@am.jll.com

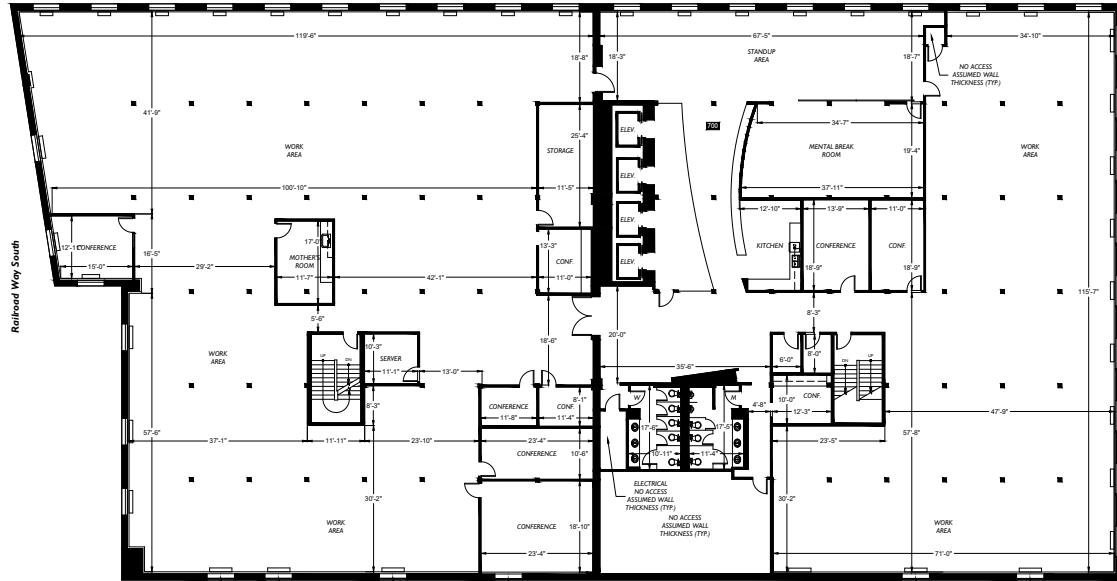


Jones Lang LaSalle Brokerage, Inc.
© 2020 Jones Lang LaSalle IP, Inc.
All rights reserved. All information contained herein is from sources deemed reliable; however, no representation or warranty is made to the accuracy thereof.



83 King

Floor 7 | 24,900 RSF



Floor 6 | 24,901 RSF

