



Office Space for **Sublease**

Jefferson Building

1401 E Jefferson St | Seattle, WA

Space highlights

- 5,179 RSF on 4th floor
- Sublease term through April 30, 2024
- Fully serviced rate of \$26.00 PSF
- 15 private offices
- 2 gender neutral, single stall restrooms in-suite
- 1 large boardroom and 1 medium sized conference room
- Elevator lobby exposure
- Impressive views to the west and south
- Incredibly strong credit sublandlord: Seattle University

Building highlights

- Easy access to hospitals, downtown Seattle
- Nearby on ramps for I-90 and I-5
- Great onsite parking



Jones Lang LaSalle Brokerage, Inc. © 2020 Jones Lang LaSalle IP, Inc.

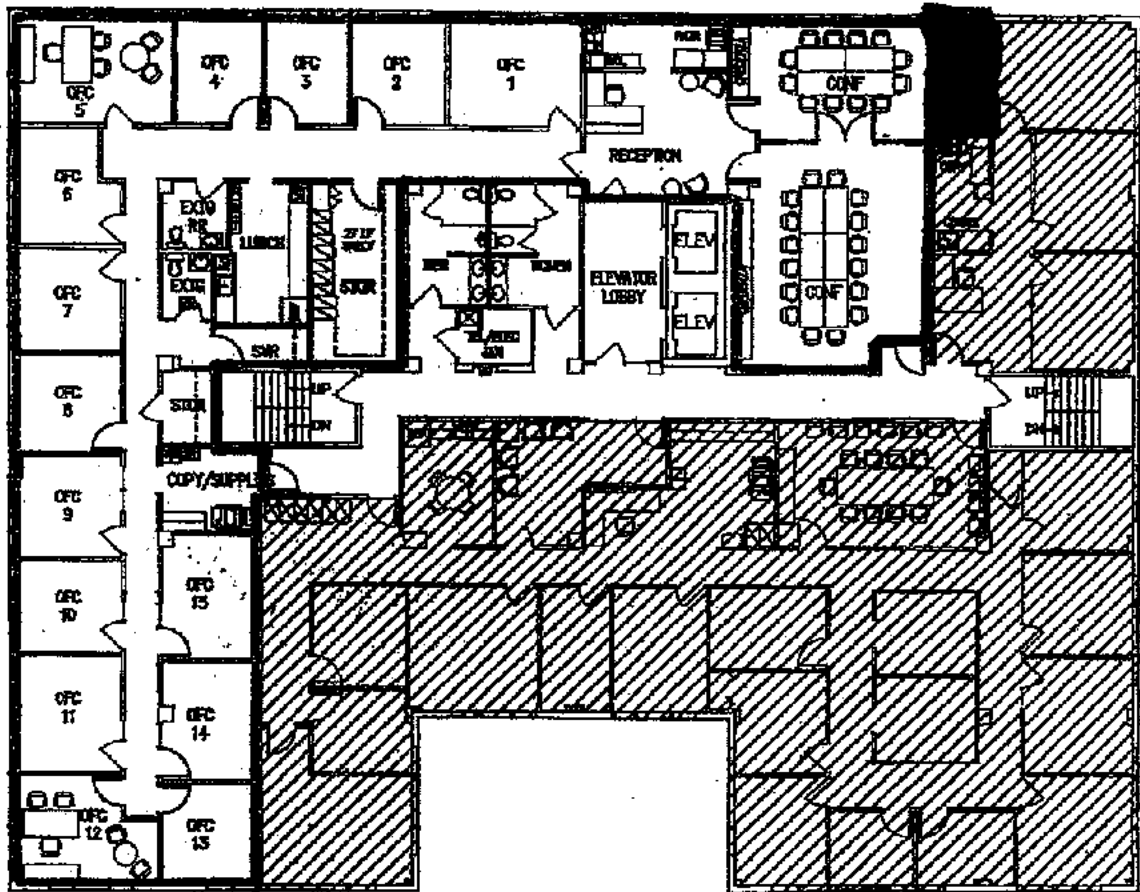
All rights reserved. All information contained herein is from sources deemed reliable; however, no representation or warranty is made to the accuracy thereof.

Jefferson Building

Floor 4 | 5,179 RSF

92
Transit Score

91
Walk Score



Lease Inquiries:

Rob Nielsen

O: +1 206 607 1722

C: +1 206 351 2762

rob.nielsen@am.jll.com

