



5,324 SF

Office space for sublease

Pacific Commercial Building

Suite 400 | 240 2nd Ave S | Seattle, WA 98104



Building snapshot

- + Renovated landmark building located in the heart of the Pioneer Square neighborhood
- + Expansive windows allow for ample natural light
- + Close proximity to many retail and restaurant amenities, transit, and I-5

By the numbers:

98

Walk Score

100

Transit Score



Sublease highlights

- + Flexible lease term
- + Creative office space with exposed brick and high ceilings
- + Furniture available
- + Mix of open work space and conference / meeting rooms
- + Space includes in-suite restrooms and a kitchen

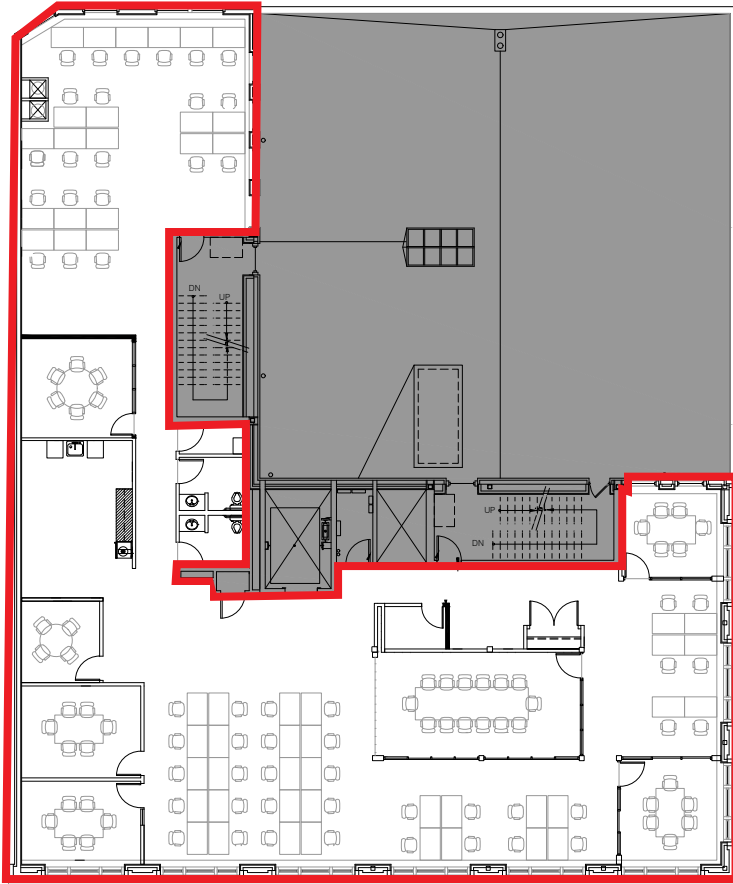


TAKE A TOUR

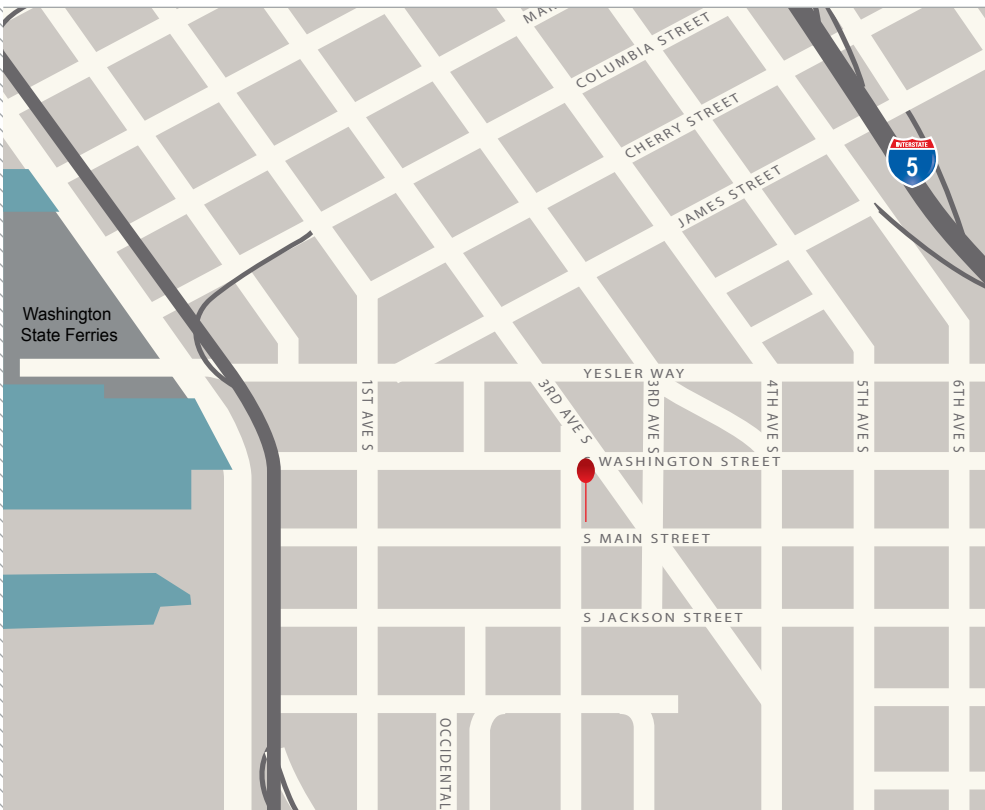


Floor plan

Floor 4 | Suite 400 | 5,324 SF



Building location



CONTACT:

Pat Pendergast

+1 206 521 2663

pat.pendergast@am.jll.com

Adam Chapman

+1 206 521 2672

adam.chapman@am.jll.com

© 2020 Jones Lang LaSalle IP, Inc. All rights reserved. All information contained herein is from sources deemed reliable; however, no representation or warranty is made to the accuracy thereof. Jones Lang LaSalle Brokerage, Inc.