



## Office space for *sublease*

### Puget Sound Plaza

1325 4th Avenue | Seattle, WA 98101

#### Space Highlights

- » Floors 8 & 11 - Available Now
- » 9,386 to 23,122 RSF available in CBD
- » City and partial views of Elliott Bay
- » Multiple space configurations with flexible sublease terms
- » Two large all hands spaces
- » Mix of private offices and open space
- » Large kitchen



## Puget Sound Plaza for *sublease*



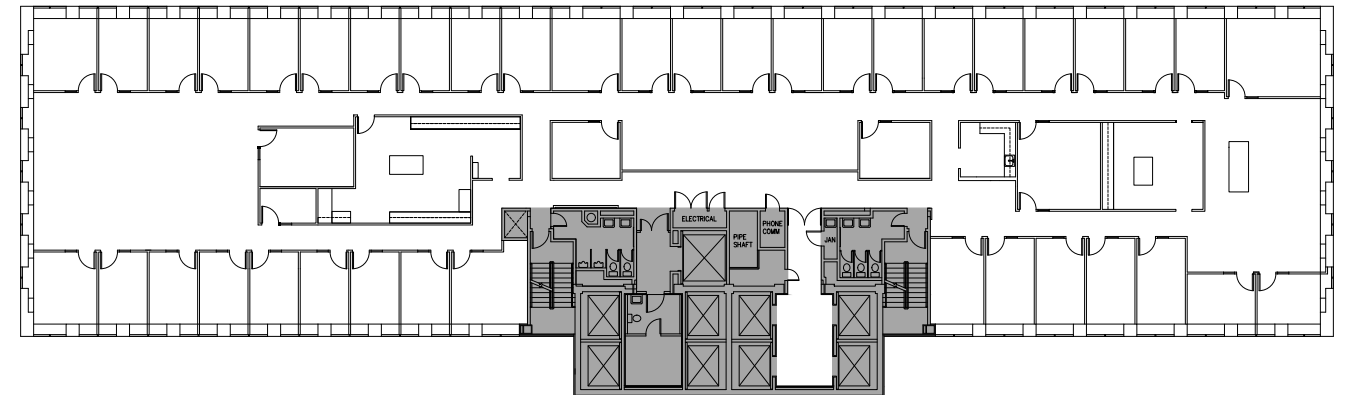
99  
Walk score



100  
Transit score

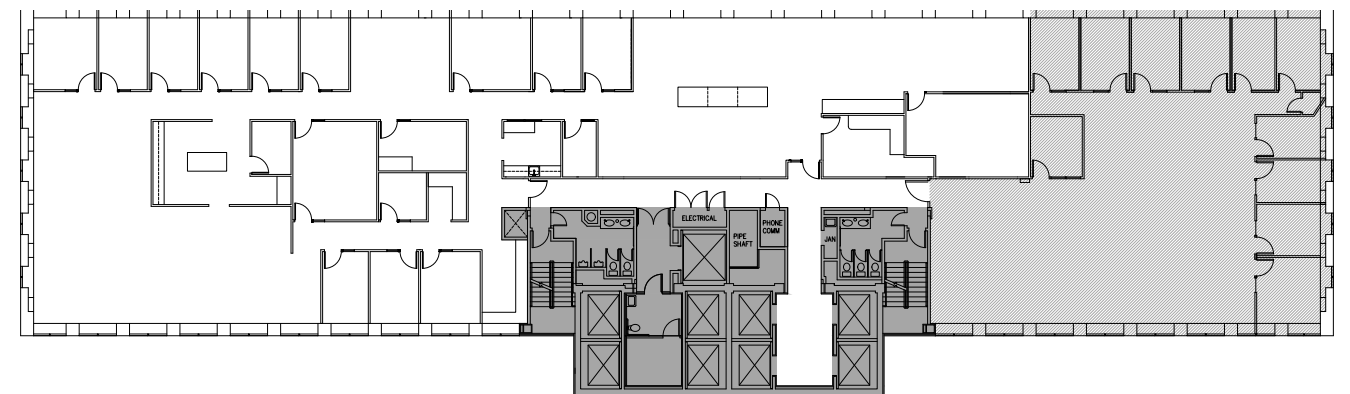
Floor 8 | 13,736 RSF

[Click to virtual tour](#)



Floor 11 | 9,386 RSF

[Click to virtual tour](#)



**Adam Chapman**  
+1 206 521 2672  
adam.chapman@am.jll.com

**Clay Nielsen**  
+1 206 521 2664  
clay.nielsen@am.jll.com

**Brooke Dowling**  
+1 206 607 1746  
brooke.dowling@am.jll.com

Jones Lang LaSalle Brokerage, Inc.  
© 2021 Jones Lang LaSalle IP, Inc. All rights reserved. All information contained herein is from sources deemed reliable; however, no representation or warranty is made to the accuracy thereof.